



# WĪCĪHSOK NĒHIYAWĒWIN

**BUILD YOUR  
VOCABULARY**

common phrases

**12**



s/he has left



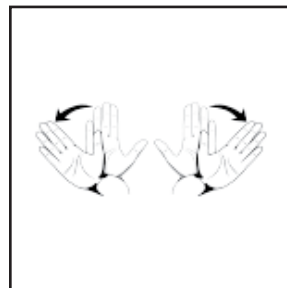
sipwētēw  
ʔV.U°

they have left already (i)



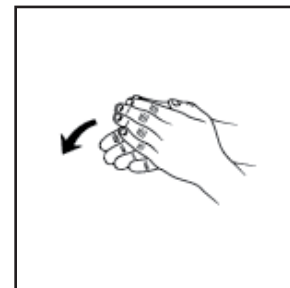
āsay sipwētēwak  
◁ʔ+ ʔV.U◁ʔ

always



kakikē  
bPq

always



tāpihtawih  
ĈΛ"CL"

s/he says it



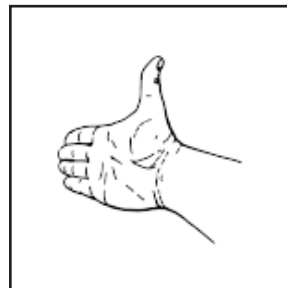
itwēw  
ΔU°

they left



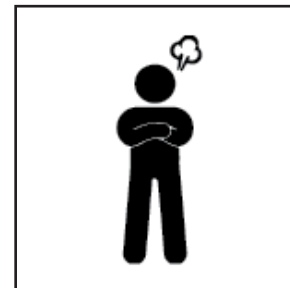
sipwētēwak  
ʔV.U◁ʔ

always



kākapēyayih  
b bVʔP"

don't



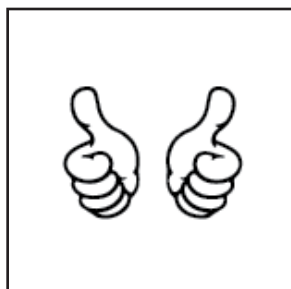
kāwīya  
b Δʔ

they have left



ē sipwētēcik  
▽ ʔV.Uʔ'

yes



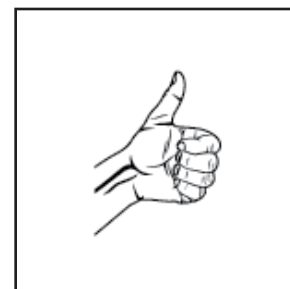
ā āh  
◁ ◁"

always



nayēstaw  
a 4^n C°

for sure



tāpwē anima  
ĈV ◁σL

i am okay



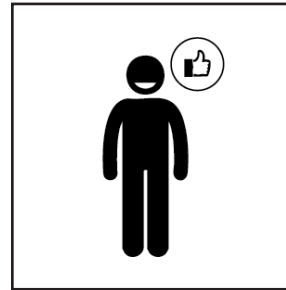
nimīwāyān  
σ ḡ ḏ ḡ ḡ ḡ

i don't know



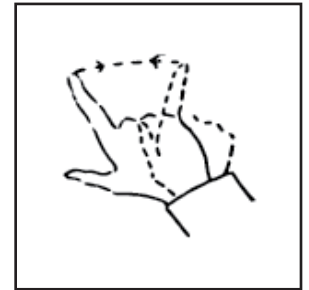
namōya nikiskēyitēn  
e ḡ ḡ σ ρ ḡ ḡ ḡ ḡ

I like you



kimīwēyimitin  
ρ ḡ ḡ ḡ ḡ ḡ ḡ

no



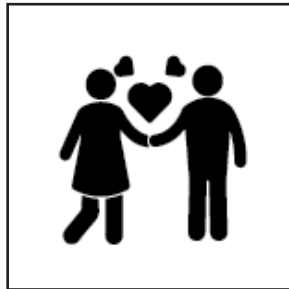
namōya  
e ḡ ḡ

i am sorry



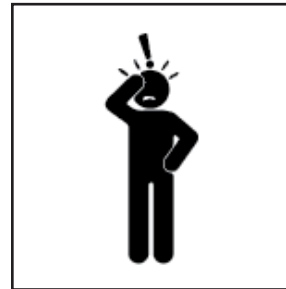
nimihtaten  
σ ḡ ḡ ḡ ḡ ḡ ḡ

i love you



kikitimākēyihmitin  
ρ ρ ḡ ḡ ḡ ḡ ḡ ḡ

i understand



ninisitōhtēn  
σ σ ḡ ḡ ḡ ḡ ḡ ḡ

now s/he has left



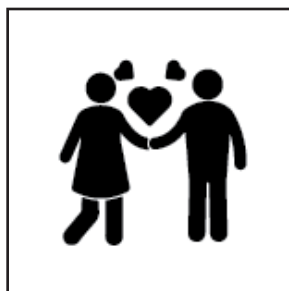
aspin ē sipwētēt  
ḏ ḡ ḡ ḡ ḡ ḡ ḡ ḡ ḡ

i am tired



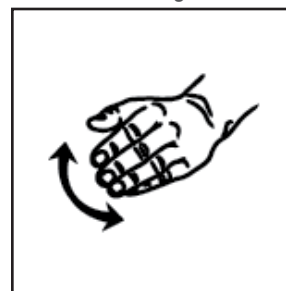
ninēstohsin  
σ ḡ ḡ ḡ ḡ ḡ ḡ

i love you



kisākīhitin  
ρ ḡ ḡ ḡ ḡ ḡ ḡ

maybe



āhpohētikwē  
ḏ ḡ ḡ ḡ ḡ ḡ ḡ

she left already



ēkwāna sipwētēw  
ḡ ḡ ḡ ḡ ḡ ḡ ḡ ḡ