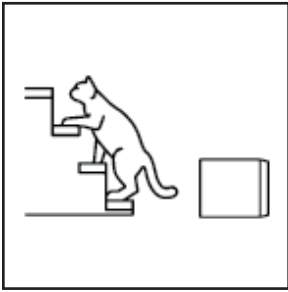




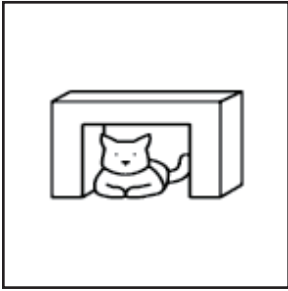
mōniyāw sākahikan nīhithawīwin

telling space

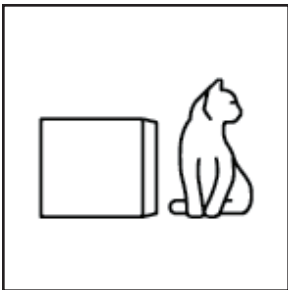




away from it
ōpimī
▷^Γ



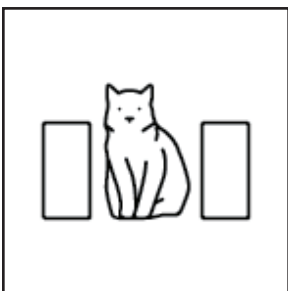
below
capas
∟<^n



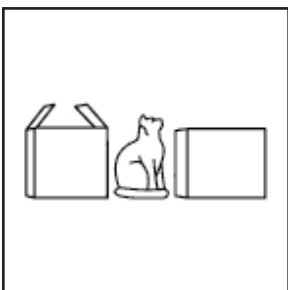
beside
pimicāyi
^Γ∟▷



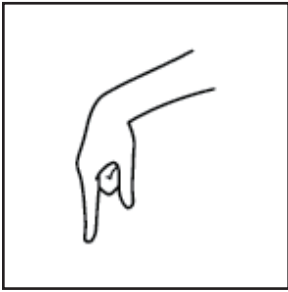
here
ōta
▷C



in between
tāwāyihk
C◁▷x



in between two objects
tastawāyihk
C^nC◁▷x



right here

ōta

▷C



under

sīpāhk

◁x