



mōniyāw sākahikan nīhithawīwin

land forms



bush



sakāw
ᕐᕐ°

lake



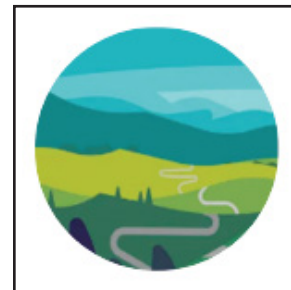
sākahikan
ᕐᕐ"Δᕐ°

road



mīskanaw
ᕐ°ᕐᕐ°

valley



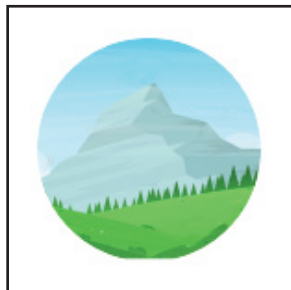
tawātinā
ᕐᕐᕐᕐ

hill



wachi
ᕐᕐ-°Δ

mountain



asinīwachī
ᕐᕐᕐᕐᕐ-°ᕐ

shore line



sisonīcimīw
ᕐᕐᕐᕐᕐ°

island



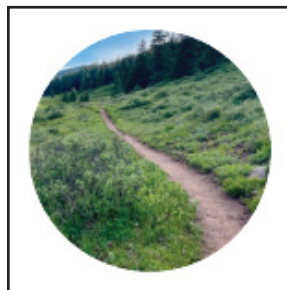
ministik
ᕐᕐ°ᕐᕐ

river



sīpī
ᕐᕐ

trail



mīskanās
ᕐ°ᕐᕐ°