



WĪCĪHSOK NĒHIYAWĒWIN

**BUILD YOUR
VOCABULARY**

weather

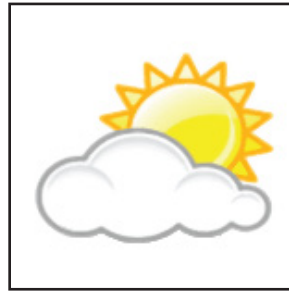
42

blizzard



pīwan
ᐱᐱᐅᐅ

calm day



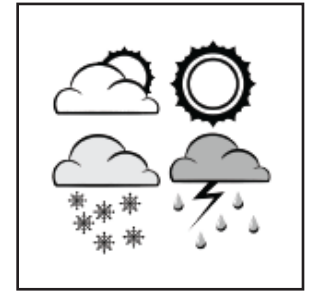
kwāmwacikīsikāw
ᐅᐱᐅᐅᐅᐅᐅᐅ

tornado



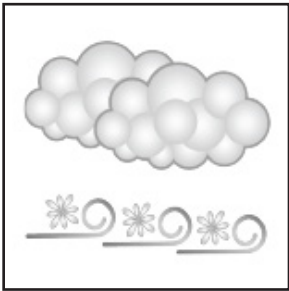
ēkīstik
ᐅᐅᐅᐅᐅᐅᐅ

weather



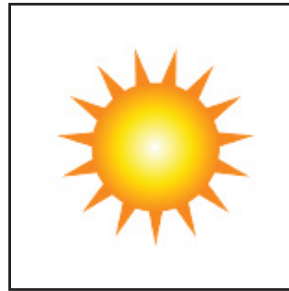
isih wēpāw
ᐱᐅᐅᐅᐅᐅᐅ

blowing snow



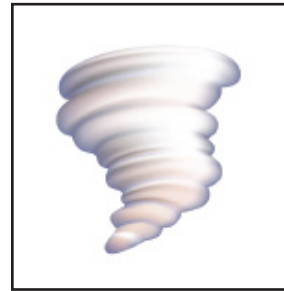
pimāsokōn
ᐱᐅᐅᐅᐅᐅᐅ

clear skies



wāsēskwan
ᐅᐅᐅᐅᐅᐅᐅ

tornado



pastosiw
ᐅᐅᐅᐅᐅᐅᐅ

wind



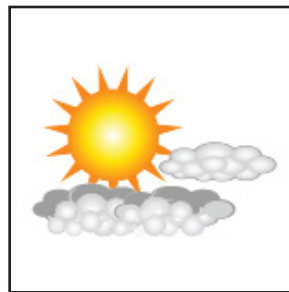
yōtin
ᐅᐅᐅᐅᐅᐅᐅ

calm



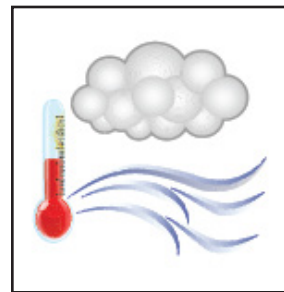
ayiwāstin
ᐅᐅᐅᐅᐅᐅᐅᐅ

clouds break up



pīkwaskāw
ᐅᐅᐅᐅᐅᐅᐅᐅ

warm winds



kīsiwēwiyōtin
ᐅᐅᐅᐅᐅᐅᐅᐅᐅᐅ

windy rain



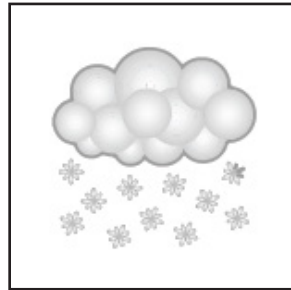
kimōwanīyotin
ᐅᐅᐅᐅᐅᐅᐅᐅᐅᐅ

rain



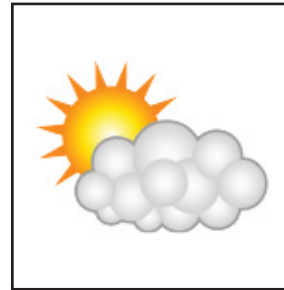
kimowan
ᐅᑭᐱᐅᑦ

snowing



mison
ᐅᑭᑦᑦᑦ

cloudy



yīkwaskwan
ᐱᑦᑦᑦᑦᑦ

downpour



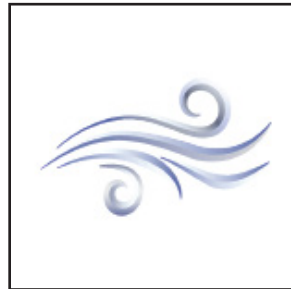
sīkipēstāw
ᑭᑦᑦᑦᑦᑦᑦ

small snow droplets



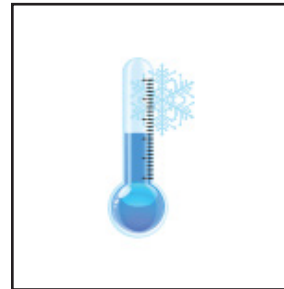
miposin
ᐅᑭᑦᑦᑦ

strong wind



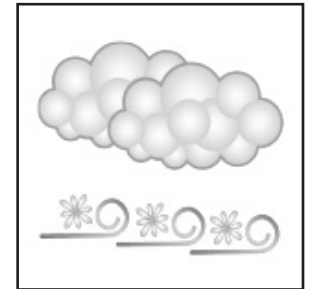
misi yōtin
ᐅᑭᑦᑦᑦᑦ

cold



tākāyāw
ᐅᑭᑦᑦᑦᑦ

drifting snow



pīwan
ᐅᑭᑦᑦᑦ

snow



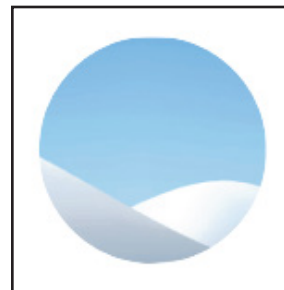
kōna
ᐅᑭᑦᑦᑦ

thunder



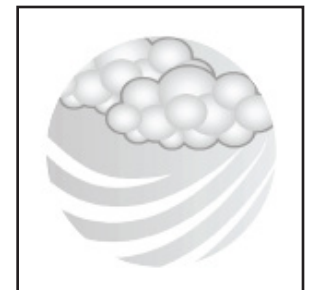
kitōwak
ᐅᑭᑦᑦᑦᑦ

deep snow



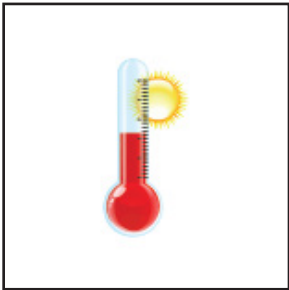
timikonin
ᐅᑭᑦᑦᑦᑦ

fog



yīyikawāw
ᐅᑭᑦᑦᑦᑦᑦᑦ

hot



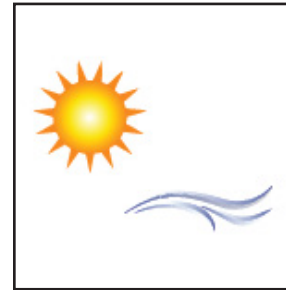
kisitēw
ᑭᑭᑦᑦ

light snow



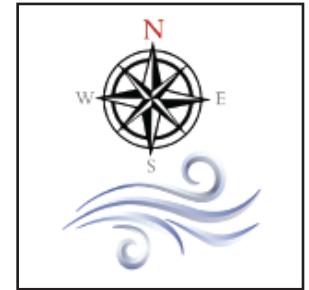
misposin
ᑭᑦᑦᑦᑦ

mild breeze



yōcisin
ᑦᑦᑦᑦ

north wind



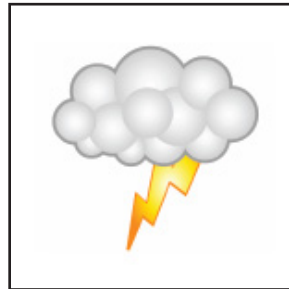
kīwētōni ōhci yōtin
ᑭᑦᑦᑦᑦ ᑦᑦᑦᑦ ᑦᑦᑦᑦ

ice



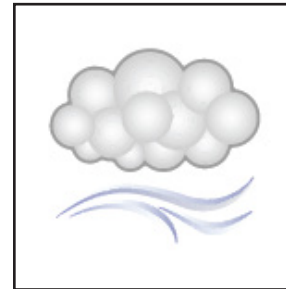
miskwamī
ᑭᑦᑦᑦᑦ

lightning



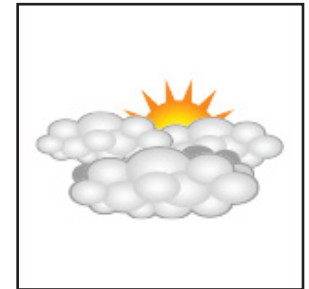
wāwāskotēpayin
ᑦᑦᑦᑦᑦᑦᑦᑦᑦᑦ

mist



kaskawinipēstāw
ᑦᑦᑦᑦᑦᑦᑦᑦᑦᑦ

overcast



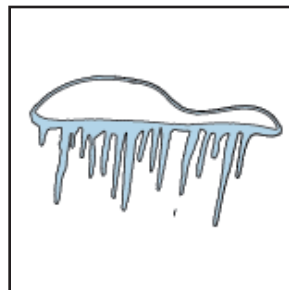
misiwēskwaw
ᑭᑦᑦᑦᑦᑦᑦᑦᑦᑦᑦ

light rain



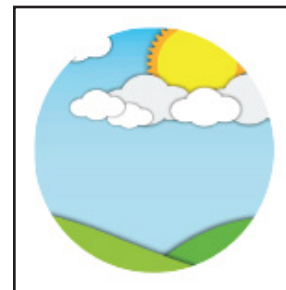
kimowasin
ᑭᑦᑦᑦᑦᑦᑦᑦᑦᑦᑦ

melting snow



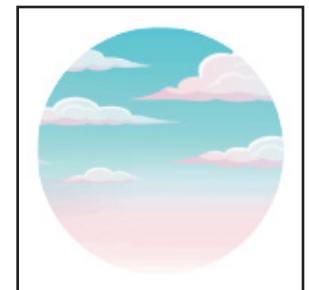
tīkisiw kona
ᑦᑦᑦᑦᑦᑦ ᑦᑦᑦᑦᑦᑦ

nice day



miyokīsikāw
ᑭᑦᑦᑦᑦᑦᑦᑦᑦᑦᑦ

pink skies



mihkwaskwan
ᑭᑦᑦᑦᑦᑦᑦᑦᑦᑦᑦ